

HELPFUL HINTS ABOUT SAFE DRYER VENTILATION

Notes, Guidelines and Other Helpful Information about How to Avoid Dryer Fire Hazards

CLOTHES DRYER FIRES HAPPEN EVERY DAY. . . . YOU CAN EASILY PREVENT THIS SCENARIO



EXCESSIVE LINT BUILD UP



CAN EASILY LEAD TO FIRE



WHICH CAN SPREAD



AND PUT YOU IN DANGER

Guidelines

- ✓ Clean your lint trap before each drying cycle and routinely check your duct and exterior vent for lint build up.
- ✓ **A DRYER VENT SHOULD NEVER HAVE A SCREEN!** Lint will build up quickly and plug the vent and create a fire hazard.
- ✓ All dryer ducting must be a minimum of 4" in diameter. It is very important maintain clean, unobstructed, frictionless ducts to encourage maximum air flow efficiency, speed up drying times and lower your energy bill.
- ✓ Flexible transition hose between the dryer and the wall outlet should be either the foil type or the aluminum flexible duct (most preferred). Do not use the plastic or vinyl.
- ✓ Concealed ducting must be rigid metal (galvanized or aluminum) duct.
- ✓ Duct joints shall be installed so that the male end of the duct points in the direction of the airflow.
- ✓ Joints should be secured with metal tape (not duct tape). Do not use rivets or screws in the joints or anywhere else in the duct as these will encourage lint collection.
- ✓ Length of concealed rigid metal ducting shall not exceed 35 feet (25' for IRC). Deduct 5 feet from the allowable length for every 90 degree elbow and two and a half feet for every 45 degree fitting. These lengths may vary per local codes and dryer manufacturer's recommendations.
- ✓ Dryer venting must be independent of any other systems (chimneys or exhaust vents)
- ✓ Termination of dryer venting must be to the exterior with a proper hood or roof jack equipped with a backdraft damper. The hood opening should point down and exhibit 12 inches of clearance between the bottom of the hood and the ground or other obstruction.
- ✓ Use a high quality exterior vent termination to allow for easy, damage free cleaning and increase energy efficiency. Click [here](#) for better quality vents.

[CURRENT DRYER FIRE RELATED ARTICLES](#)

[REPORT FROM DEPARTMENT OF HOMELAND SECURITY](#)

[PLEASE FIND ME A BETTER DRYER VENT](#)

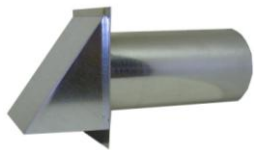
www.luxurymetals.com

HELPFUL HINTS ABOUT SAFE DRYER VENTILATION

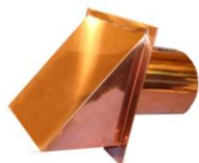
Notes, Guidelines and Other Helpful Information about How to Avoid Dryer Fire Hazards

Good Practices

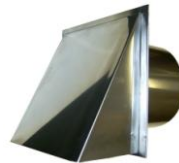
- ✓ Actually inspect the termination port of the dryer and the wall or roof jack. Look for birds nest or clogged openings. Most importantly, feel for proper exit velocity of the air leaving the vent and look at or feel the interior walls of the duct.
- ✓ If you suspect clogged or partially clogged exhaust ducting, it is likely you need to have them cleaned. Dryer vent cleaning improves the safety and efficiency and depending on the venting circumstances, should be cleaned or inspected every 6-12 months.
- ✓ Make sure your flex transition hose is not kinked or crushed. The space behind your dryer should be sufficient as to provide adequate room for the flex transition hose to make its bends with minimal deflection and restrictions.
- ✓ Dryer vent cleaning is a very real commercial trade and the contracted work is sometimes described as Routine and Problem Cleaning.
 - Routine cleaning is done from the outside by sending an air-propelled "jet-snake" through the vent. It blows air 360 degrees backwards, blasting the lint loose and blowing it outside. The lint is caught in a special bag.
 - Problem Cleaning is performed when an individual dryer is not drying clothes fast enough. They disconnect and pull the dryer out, install a large blower on the vent, and blow, brush, vacuum and/or dismantle - whatever it takes to get the vent clean.
- ✓ Look in your Yellow Pages under Duct Cleaning or search the Internet.
- ✓ The use of the white vinyl flex pipe is all but completely prohibited, both by building departments and appliance manufacturers. Some municipalities allow or do not discourage the foil covered vinyl flex but almost all appliance manufacturers insist on the use of the aluminum flexible pipe.
- ✓ Keep exhaust duct as straight and short as possible. Exhaust systems longer than the manufacturer's recommendations can extend drying times, affect appliance operation and may encourage lint build-up on pipe lining.
- ✓ When running the clothes dryer, be careful not to overdry. Running your dryer too long not only wastes energy but can also damage your clothes. We recommend using an automatic setting, such as "less dry" rather than a timed setting.
- ✓ Clean lint filters regularly. Cleaning the lint filters on your washer and dryer will save energy, improve performance, and minimize fire hazards.



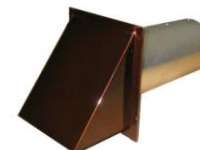
GALVANIZED DRYER VENT



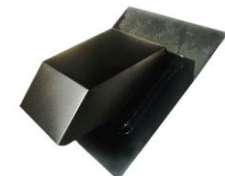
COPPER DRYER VENT



STAINLESS DRYER VENT



PAINTED DRYER VENT



ROOF DRYER VENT

www.luxurymetals.com

206.406.7346 or dave@luxurymetals.com